



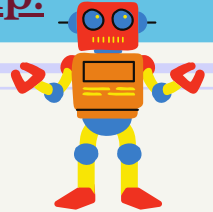
LIFE SCIENCE CARES  
boston

# HOLIDAY HELPERS 2021

[Reach out to bailey@lifesciencecares.org to sign up.](mailto:bailey@lifesciencecares.org)



## ANNUAL TOY DRIVE



LSC and our partner, Madison Park Development Corporation, are working to ensure that **more than 700 children** receive at least one gift this holiday season! Sign your team up to sponsor toys, gift cards, and wrapping paper. First, decide how many gifts your company will commit to sponsoring. Then, we'll send you a list of the coolest new gadgets & fun toys and help you coordinate your drive. Sign up TODAY to reserve your spot!

[Click here for full details.](#)



## FILL-A-SLEIGH WITH CHILDREN'S WINTER GEAR

We've partnered with Room to Grow and turned their usual Fill-A-Truck campaign into a winter party! Sign your company up to help Fill-A-Sleigh with winter gear for kids. The sleigh will 'fly' around town on December 17 to collect the items, while playing holiday tunes and throwing a micro-party for your team. We'll even be handing out prizes for Most Items Collected, Best Holiday Outfits, and Ugliest Sweaters! [Click here for full details.](#)

## GIVE HOMELESSNESS THE BOOT!

**300 of our neighbors** need our help! CASPAR and LSC are aiming to provide new boots and warm winter gear to individuals experiencing homelessness. Companies decide how many individuals to sponsor and can either purchase the items from a provided list or donate \$150 person person. [Sign up by December 1 to participate!](#)



# HOLIDAY HELPERS

Reach out to [bailey@lifesciencecares.org](mailto:bailey@lifesciencecares.org) to sign up.



## HOST A HOLIDAY DRIVE



You can host a drive to help our nonprofit partners fill urgent needs for winter gloves & hats, socks, sneakers & boots, and hygiene products. Other drive options include books, STEM-related toys, and iPad/laptops.

[Click here for complete details.](#)

## FLIP YOUR HOLIDAY PARTY INTO A GIFT FOR LSC

Did you budget for a holiday party or gifts for your employees or clients, but everyone's still remote? Would you rather spend your internal holiday budget on giving back? Pass those funds along to LSC, and we'll put it out into the community via the grants we make to our nonprofit partners! We'll celebrate your generosity on our social media and provide you with tools to let your employees and clients know that you're prioritizing supporting your community and neighbors in need this holiday season.

## SHARE THE LOVE

### **DONATE YOUR SPACE: Supporting College Students with The Wily Network** **Packsgiving Celebration**

***Sun., 11/21, time flexible***

The Wily Network needs a company to donate cafeteria space so they can host their annual Thanksgiving celebration for their "pack" of students.

### **Join the LSC Cares Crew**

Life Science Cares is looking to build a team of short notice and emergency contacts for last-minute pick ups for our nonprofit partners, apartment assembly, and more!



### **Sponsor a Special Meal for Homeless Neighbors**

Help Pine Street Inn provide their guests with healthy, nutritious meals. Either cover the cost of a meal at an emergency shelter or order a catered meal and have it delivered.

# HOLIDAY HELPERS

[Reach out to bailey@lifesciencecares.org to sign up.](mailto:bailey@lifesciencecares.org)

## IN-PERSON SHIFTS



### Volunteer at the Giving Factory with Cradles to Crayons

**Tues. (6:00-8:00 pm)**

**Wed., Thurs., Sat. (10:00 am-12:00 pm) OR (1:00-3:00 pm)**

**Fri. (10:00 am-12:00 pm)**

Sort, quality check, and package donations of children's items with your team, friends, or family.

*Groups of up to 80 people accepted, ages 5 and up.*

### Prepare Meals for Community Servings

**Weekdays, 3 shifts**

**Morning shift (9:00-12:00 pm)**

**Afternoon shift (1:00-5:00 pm)**

**Evening shift (4:00-7:00 pm)**

Slice, chop, cook, bake, assemble, and package meals for individuals and families battling HIV/AIDS, cancer, heart failure, diabetes, and other life-threatening illnesses.

*Great for groups of up to 30 people, ages 13 and up.*

### Prepare Snowsports Equipment in a Ski Shop

**Sat. 11/13 (10:00 am-2:00 pm)**

**Mon. 11/15 (5:00-8:00 pm) OR (6:00-9:00 pm)**

**Mon. 11/22 (5:00-8:00 pm) OR (6:00-9:00 pm)**

Volunteer at the Youth Enrichment Services Ski Shop in the South End. Help prepare ski equipment for Boston youth participating in YES's winter snow sports program. No prior experience necessary.

*Great for groups of up to 15 people, ages 18 and up.*

### Deliver Groceries with Food For Free

**Fri., Sat., Sun. (11:00 am-1:30 pm)**

Regular and on-call drivers needed to deliver boxes of food to food-insecure residents in Cambridge.

*Great for groups of up to 15 people, volunteers under 15 years must be accompanied by an adult.*

### Give Back as a Ski/Snowboarding Instructor

**Weekly commitment throughout season**

Youth Enrichment Services is looking for volunteer coaches for downhill skiing, cross country skiing, and snowboarding. Prior experience on the snow is preferred, but not required.

*Open to adult volunteers ages 18 and up.*

### Cookin' with CASPAR

**Wed. (2:00-6:00 pm)**

Feed our neighbors experiencing homelessness delicious, healthy food by sponsoring, preparing, serving, and cleaning up a dinner for 100 guests at the CASPAR Homeless Shelter.

*Great for groups of 10-14 people.*

### Pack Groceries with Food For Free

**Mon., Tues., Wed. (9:00-11:30 am) OR (12:30-3:00 pm)**

Join Food For Free to pack grocery boxes for food-insecure families in Greater Boston.

*Great for groups of up to 15 people, volunteers under 15 years must be accompanied by an adult.*

## GIVE BACK VIRTUALLY

### Host A Webinar With Tech Goes Home

**An hour of lecture-style instruction followed by a 10-30 minute Q&A session.**

Lead digital skills webinars for beginner technology users. Join this initiative to advance digital equity.

### Take a Virtual Tour of Pine Street Inn

Spend an hour over Zoom learning about Pine Street Inn and seeing the innerworkings of their multiple facilities. Teams and individuals are welcome to sign up to learn about this organization. Schedule a time by signing up.

### Conduct Mock Interviews with Project Hope

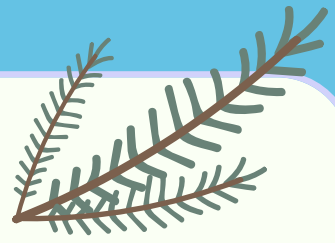
Project Hope's Administration Jobs in Healthcare class prepares participants to become competitive candidates for employment in the healthcare sector. Volunteers have the opportunity to meet and interact with program participants directly and make an immediate impact on participant career trajectories. Great for groups of up to 10 people.

### Lunch, Learn, and Take Action Events

Invite your employees to hear from our incredible partners, including but not limited to Boston Healthcare for the Homeless, Hope and Comfort, Tech Goes Home, and Kids in Tech.

### Bring the Giving Factory Home

Volunteers pick up projects (or Cradles to Crayons delivers a set of projects to a central location) that replicate in-person volunteer activities, such as sorting or sizing children's clothing. Once complete, projects make their way back to Cradles to Crayons for the next step in the distribution process. Great for in-office team building and families.



# HOLIDAY HELPERS

## SHOP WITH AN IMPACT



### **Boomerangs**

All proceeds of the thrift shop go to the AIDS Action Committee of Massachusetts.

### **Rosie's Place Woman's Craft Cooperative**

Purchase beautiful jewelry from artisans of Rosie's Place. Proceeds from sales support vital programs and services for poor and homeless women.

### **Gateway Arts**

Support adults with disabilities build meaningful careers in art by purchasing beautiful artwork.

### **More Than Words**

Purchase books & clothing! All proceeds empower youth who are in foster care, homeless, or out of school.

### **iCater**

Support Pine Street Inn's social enterprise and job training program and provide meals for shelter guests.

### **STATE**

Purchase one of STATE's bags, and they will donate a fully-packed backpack to a local student in need.

### **Bombas**

Bring desperately needed socks to homeless individuals.

### **Uncommon Goods**

Purchase unique finds with proceeds going to forest conservation, national disaster relief, and other issues.

### **Global Goods Partners**

Proceeds go to bridging gaps, opening doors and providing opportunities for artisan women to join the international marketplace.

### **Roma Boots**

Ship waterproof boots around the world with your purchase.

### **Soap Box**

Buy bars of soap and give soap and hygiene education to those in need.

### **Bookshop**

Order books from independent bookstores from any location! 100% of the profits from your purchase will go to that bookstore.

## #SHOPBLACK

### **RESTAURANTS**

- Exodus Bagels (Jamaica Plain)
- Wingz & Tingz (Hyde Park)
- Flames Caribbean (Multiple locations in Boston)
- Asmara (Cambridge)
- Obosa Foods (Roslindale)
- Caked (Somerville)
- Infused Kreyol (Malden)
- Tipping Cow Ice Cream (Somerville)

### **CLOTHING AND BEAUTY**

- House of Culture (South End)
- Nouveau Fashion Gallery Women's fashion store (Boston)
- Bonita Hair Salon (Somerville)
- Hair It Is Barbershop (Mattapan)
- Soap Her Girl (Somerville)
- BLACK LABEL (Somerville)

### **RECREATION**

- Frugal Bookstore (Roxbury)
- Trust Therapeutics (Boston)
- Anointed Hands Massage & Spa Essentials (Randolph)
- The Williams Agency (Cambridge)
- Little Cocoa Bean Co. (Boston)

### **NATIONAL BRANDS**

- The Honey Pot Company (Feminine Care)
- Mielle Organics (Hair Care)
- Pyer Moss (Fashion)
- Pat McGrath (Cosmetics)
- Telfar (Handbags)
- Alexandra Winbrush (Candles)
- CultureFit (Athleisure Wear)
- Pipcorn Heirloom Snacks (Food)
- Blk & Bold (Coffee)

